

Postal Code 78721

Residential Statistics



October 2021

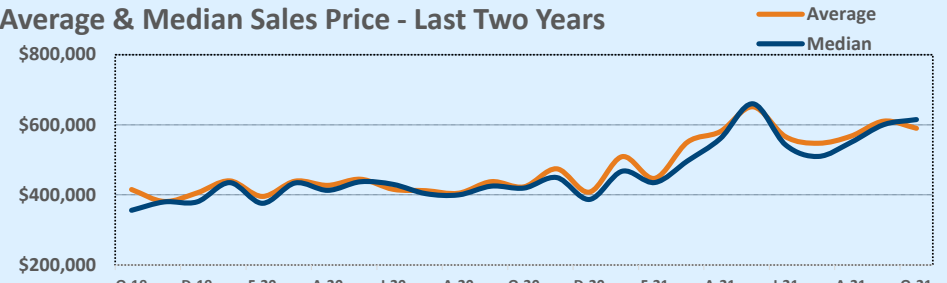
Listings	This Month			Year-to-Date		
	Oct 2021	Oct 2020	Change	2021	2020	Change
Single Family Sales	14	26	-46.2%	160	222	-27.9%
Condo/TH Sales	9	4	+125.0%	59	44	+34.1%
Total Sales	23	30	-23.3%	219	266	-17.7%
New Homes Only	8	9	-11.1%	55	98	-43.9%
Resale Only	15	21	-28.6%	164	168	-2.4%
Sales Volume	\$13,572,400	\$12,691,775	+6.9%	\$123,863,625	\$112,530,579	+10.1%
New Listings	25	27	-7.4%	281	321	-12.5%
Pending	--	--	--	--	--	--
Withdrawn	3	2	+50.0%	9	16	-43.8%
Expired	3	2	+50.0%	9	16	-43.8%
Months of Inventory	1.8	1.5	+16.3%	N/A	N/A	--

Average	This Month			Year-to-Date		
	Oct 2021	Oct 2020	Change	2021	2020	Change
List Price	\$592,246	\$422,890	+40.0%	\$544,564	\$424,840	+28.2%
List Price/SqFt	\$449	\$333	+34.6%	\$405	\$327	+23.8%
Sold Price	\$590,104	\$423,059	+39.5%	\$565,587	\$423,047	+33.7%
Sold Price/SqFt	\$445	\$334	+33.3%	\$421	\$325	+29.4%
Sold Price / Orig LP	99.4%	100.0%	-0.6%	104.5%	99.5%	+5.0%
Days on Market	19	27	-27.0%	21	35	-39.4%

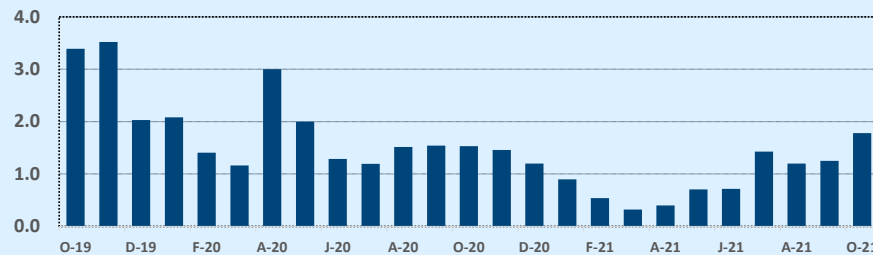
Median	This Month			Year-to-Date		
	Oct 2021	Oct 2020	Change	2021	2020	Change
List Price	\$599,999	\$427,250	+40.4%	\$525,000	\$422,495	+24.3%
List Price/SqFt	\$427	\$340	+25.7%	\$394	\$311	+26.6%
Sold Price	\$615,000	\$419,500	+46.6%	\$546,000	\$420,000	+30.0%
Sold Price/SqFt	\$431	\$343	+25.7%	\$415	\$311	+33.4%
Sold Price / Orig LP	99.3%	99.9%	-0.6%	100.1%	99.8%	+0.3%
Days on Market	12	13	-4.0%	8	12	-33.3%

Price Range	This Month			Year-to-Date		
	New	Sales	DOM	New	Sales	DOM
\$149,999 or under	--	--	--	--	--	--
\$150,000- \$199,999	--	--	--	1	--	--
\$200,000- \$249,999	--	--	--	--	1	138
\$250,000- \$299,999	--	--	--	3	2	18
\$300,000- \$349,999	--	--	--	14	5	26
\$350,000- \$399,999	3	3	9	32	22	18
\$400,000- \$449,999	1	4	34	35	31	29
\$450,000- \$499,999	3	1	26	29	25	20
\$500,000- \$549,999	3	2	9	26	24	15
\$550,000- \$599,999	6	1	11	38	25	13
\$600,000- \$699,999	5	4	26	49	40	24
\$700,000- \$799,999	2	8	16	32	26	16
\$800,000- \$899,999	2	--	--	13	11	10
\$900,000- \$999,999	--	--	--	4	5	24
\$1M - \$1.99M	--	--	--	5	2	145
\$2M - \$2.99M	--	--	--	--	--	--
\$3M+	--	--	--	--	--	--
Totals	25	23	19	281	219	21

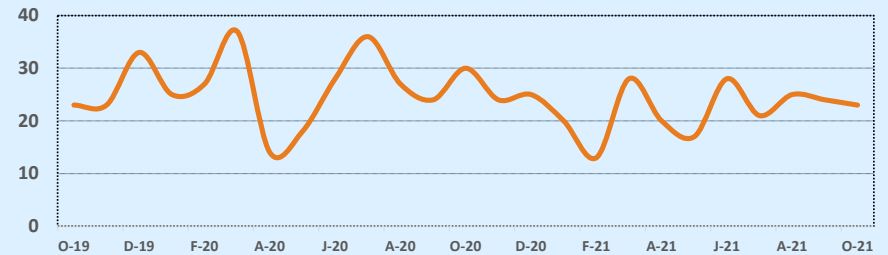
Average & Median Sales Price - Last Two Years



Months of Inventory - Last Two Years



Number of Sales - Last Two Years



Based on information from the Austin Board of REALTORS® (alternatively, from ACTRIS). Neither the Board nor ACTRIS guarantees or is in any way responsible for its accuracy. The Austin Board of REALTORS®, ACTRIS and their affiliates provide the MLS and all content therein "AS IS" and without any warranty, express or implied. Data maintained by the Board or ACTRIS may not reflect all real estate activity in the market.